



Benefon Commander NT

Commercial
Presentation

Benefon Commander NT! GSM+GPS for professional use



- Advanced dual-band GSM phone
- High-performance GPS navigator
- Mobile Monitor
- Detailed Mobile Maps
- Emergency button
- Tough and splash-proof: Stainless steel, glass reinforced plastic, elastomere
- High-resolution graphical grey-level display
- Size of ordinary mobile phone (138 cm, 23 mm thin)

Benefon Commander NT



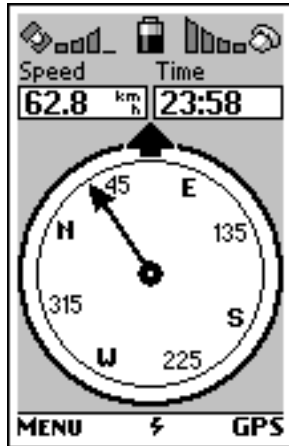
- Mobile Monitor
- Navigation & guidance
- Maps
- Safety
- Design
- Additional Services

Mobile Monitor menu



- Mobile Monitor menu
 - shows locations of 30 units
 - calls can be made directly through the menu
 - activation of area tracking for an unit
 - possibility to adjust unit's GPS mode
- Shows status messages on a map and in the mode window
 - map screen for emergency and status messages
 - Coordinates and speed displayed in the mode window. Also e.g. shows extra fields of Benefon Trackbox's status messages and date and time of the action.

Navigation



•Navigation functions

- Heading, speed, distance
- Waypoints and routes
- Trip odometer

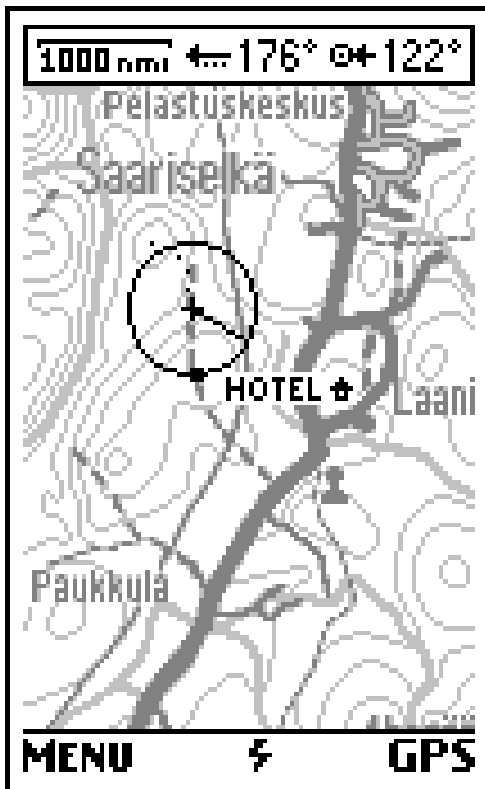
•Advantages

- Know your position, direction and distance to target
- Easy to navigate according to predefined routes or towards a point
- See your location and route on the map
- Navigate with the compass towards your set destination
- Know travelled distance and route lengths



Using maps

- Maps



- See your position on a map screen
- Waypoints and routes on map screen
- Automatic scrolling
- Map can be panned and zoomed
- Pointing mode can be used for: setting destination, measuring distance, creating a waypoint, editing a waypoint, sending co-ordinates, sending a waypoint

- Advantages

- Know your position, direction and distance to target, displayed on a map screen

Internet based Map Service

- Internet based distribution of Mobile Maps by Genimap
<http://esc.genimap.com>
 - City, road, and topographic maps, and nautical charts
- Easy to download with a data cable



Maps on CD-ROM

World Mapper by Divitech: City and road maps for Benefon Esc! and Benefon Commander NT

- Fast, easy and user friendly
- Based on best quality vector geographic database powered by Navigation Technologies
- Allows user to select the area of interest and then to download it
- Fully customisable map size and scale
- Provides wide spatial coverage from main roads crossing the country, to the shortest street in the city centre



MapMaker-

the tool to make your maps wireless

- Making map providing as easy and fast as it can be
- Allows Benefon partners and customers to modify map material to be used in the BenefonEsc! and Benefon Commander NT
- Simple encryption application to convert your original maps into a protected format not usable by any other application
- Benefon MapMaker user interface to view, download and manage encrypted maps
- Benefon MapMaker design scheme, guidelines and background images for CD-ROM printings and cases

Safety device

- Emergency button
 - One-touch emergency button
 - Sends up to five SOS messages with the user's location and a voice connection is opened to a predefined number
- Advantages
 - In emergency situations you can easily send an emergency message with location to a predefined number
 - Backup for people moving outdoors in harsh conditions - anything can happen
 - Your family and friends know you are safe



Design for rough conditions

- Design

- Elastomere grip
- Splash-proof
- Operating temperature -25 °C to +55 °C
- Tough but small, weighs only 177g

- Advantages

- Optimised for use outdoors
- Endures rough conditions
- Size and keypad designed for use with gloves



Additional services

- Bene Logos
 - Freedom to choose your own logo on start-up display at www.benefon.com



Benefon Commander NT



For more information

www.benefon.com